



PLATINUM EXPLORER

6th GEN ULTRA DEEPWATER DRILLSHIP

More information: marketing@vantagedrilling.com



TECHNICAL SPECIFICATIONS

General Information

Rig Design	DSME 10,000
Year Entered Service	2010
Builder	DSME
Class	DNV 1A Ship- Shaped Drilling unit BIS DPS (3)
Flag	Bahamas

General Specification

Hull Length	781'
Hull Breadth	138'
Hull Depth	62'
Moon Pool	82' x 41'
Accommodation	180 POB
Helideck	CAP437, 90ft Octagon, Sikorsky S-61N, S-92 Compatible

Operational Capabilities

Maximum Water Depth	10,000' designed/ 10,000' outfitted
Minimum Water Depth	1,500'
Transit Draft	27.8'
Maximum Drilling Depth	40,000'
Variable Deck Load	25,000 MT
Maximum Setback	1,000 MT, 500 MT (In field Transit)

Tubular Handling Capabilities

Pipe Feeding Machine	1 x AKMH Tubular Feeding Machine, SWL 15 MT, 2-7/8" to 30", suitable for handling 45 ft tubular
Pipe Rackers	2 x AMH Bridge Racking cranes, Lower Guiding Arms, each 15 MT, 3 1/2" to 13 5/8"
Riser Feeding Machine	1 X AKMH Riser Feeding Machine, SWL 40 MT, 2-7/8" to 54", suitable for handling 83 ft tubular
Manipulator Arm	1 x AKMH Drill Floor Manipulator arm, 3 1/2" to 60"
Pipe Deck Handling Crane	1 x AKMH PDPH, SWL 4.5 MT to 9 MT, 2 7/8" to 20"

Offline Capabilities

Offline Stand Building	1 x AKMH Stand building arm for offline tubular handling lifting capacity of 6.4 MT, 15 ft to 45 ft tubular, 2 7/8" to 13 5/8"
Offline Roughneck	1 x AKMH 'Torque Master' for tubular range 2 7/8" to 20" for offline operations.
Offline Mouseholes	2 x AKMH Hydraulic Mousehole for up to 13 5/8"
Offline Bucking Unit	1 x McCoy Clincher Bucking Machine RP3014, Headstock – 3 1/2" to 13 1/2", Tailstock – 3 1/2" to 17 1/2", Make-up torque 160k ft-lbs, Break-out Torque 190k ft-lbs

Storage Capacities

Diesel	55,404 bbls
Drill Water	14,911 bbls
Potable Water	8,630 bbls
Bulk Material	31,642 ft3 (mud + cement)
Base Oil	5,118 bbls
Brine	5,118 bbls
Active Mud	8,942 bbls active / 10,564 bbls reserve
Trip Tank	137 bbls
Sack Store	10,000 sacks

Mud System

Working Pressure	7,500 psi
Mud Pumps	4 x AKMH Wirth model TPK-7 1/2 x 14 / 2200 CL, Gear driven, 2,200 hp 7,500 psi c/w 2 x GE AC motors
Shakers	6 x DP 626 , 7G, BEM dual deck shakers (2 configured as Mud cleaners with 4 x 20" cones each)

Handling Systems

Deck Cranes	- 3 x Liebherr model BOS 4200-85, 85 mt max load at 9 m radius & 32.7 mt at 46 m radius (static), Auxiliary hook 15 mt max load at 51 m radius - 1 x Liebherr model BOS 4200-50, 50 mt max load at 9 m radius & 34.2 mt at 46 m radius (static), Auxiliary hook 15 mt max load at 51 m radius
Riser Gantry Crane	1 x AKMH Riser Gantry Crane, SWL 40 MT
BOP Handling	1 x AKMH BOP Trolley, SWL 460 MT 2 x AKMH LMRP Overhead Gantry Crane, each SWL 75 MT
Xmas Tree Handling	1 x AKMH Xmas Tree Trolley, SWL 150 MT 2 x AKMH Xmas Tree Overhead Gantry Crane, each SWL 75 MT

Well Control Equipment

Blowout Preventer	1 x Cameron BOP, 18 3/4" 15,000 psi, 5 x ram cavities (2 x Type TL doubles, 1 x TL Singles), 1 x Type DL, 18 3/4", 10,000 psi annular preventer
LMRP	1 x Cameron Type DL, 18 3/4", 10,000 psi annular preventer
Diverter	1 x Hydрил 60 1/2" 500 psi with 16" diverter lines, 16" flow line, 16" Mud Gas separator line, 6" trip tank line, 4" fill up line. 21" nominal bore

Power Generation

Main Engines	6 x STX MAN 14V32/40 diesel engines, 7,000 kW @ 720 rpm c/w HHI HSI7 1205-10P Electric Generator
Emergency Engines	1 x STX MAN B&W diesel engine, 2,100kW at 720 rpm c/w HHI Electric Generator

Revision Date: August 2021

These specifications are intended for general reference purpose only and shall not be contractually binding. Contractor reserves the right to change these specifications at any time without prior notice. All equipment shall be operated and maintained in line with Vantage guidelines and within the limits of OEM specifications.



PLATINUM EXPLORER

6th GEN ULTRA DEEPWATER DRILLSHIP

More information: marketing@vantagedrilling.com



TECHNICAL SPECIFICATIONS

Drilling Package

Derrick	Aker Kvaerner Maritime Hydraulics (AKMH) Single Pyramid Dynamic Derrick, 46 ft x 52 ft base x 210 ft clear working height, API-4F 3rd Edition
Hookload Capacity	2 million lbs static hookload capacity
Racking Capacity	6 $\frac{5}{8}$ " Drill pipe—368 stands x 135 ft (49,680ft) 9 $\frac{1}{2}$ " Drill collars— 8 stands x 135 ft (992 ft) 13 $\frac{3}{8}$ " casing - 35 stands x 135 ft (4,725 ft) or, 9 $\frac{3}{4}$ " casing - 54 stands x 135 ft (7,290 ft) or, 7" liner – 91 stands x 135 ft (12,285 ft)
Drawworks	1 x AKMH Wirth GH 4500-EG-AC electric motor driven 4,500 HP,
Rotary Table	1 x AKMH Wirth RTSS 60 $\frac{1}{2}$ ", hydraulically driven, 20 rpm, 1,000ton capacity
Iron Roughneck	1 x AKMH 1899 MKII Iron Roughneck for Well Center Operations, 2 3/8" to 9 3/4"
Topdrive	1 x AKMH model DDM-1000-AC-2M, 1,000 tons hoisting capacity, AC motor driven, 87,020 ft lbs max continuous torque, 94,395 ft lbs intermittent, 0 -240 max rpm, 2 x 1150 hp AC motors

Riser Equipment

Riser	21" Aker Kvaerner CLIP riser w/ 15k psi, 4.5" ID Choke and Kill lines, 5k psi, 4" ID booster line, 2 x 5K psi 3.5" ID hydraulic lines
Riser Tensioning	8 x AKMH Dual wire line tensioner, 3,200,000lbs combined capacity with a maximum net effective stroke of 12.5 ft.
Motion Compensators	- 1 x AKMH Crown Mounted Compensator, rated at 908mT / 2000 kips (static) and 454mT / 1000kips (Compensation) with a 25 ft stroke - 1 x AKMH Active Heave Compensator, rated at 25.6mT with a 25 ft stroke, AHC WD (while drilling) upgradeable

Station Keeping & Propulsion System

DP Control System	DPS33, GE Convertteam, Triplex DP + IJS. 3 x independent GNSS + 2 x independent acoustic systems
Thrusters	6 x 4.6 MW Rolls Royce Ulstein Aquamaster UUC 405 Azimuth (81.8 mt thrust nominal), variable speed, fixed pitch, fully azimuthing

This is the end of technical specifications sheet.
For more information, please, contact: marketing@vantagedrilling.com



PLATINUM EXPLORER

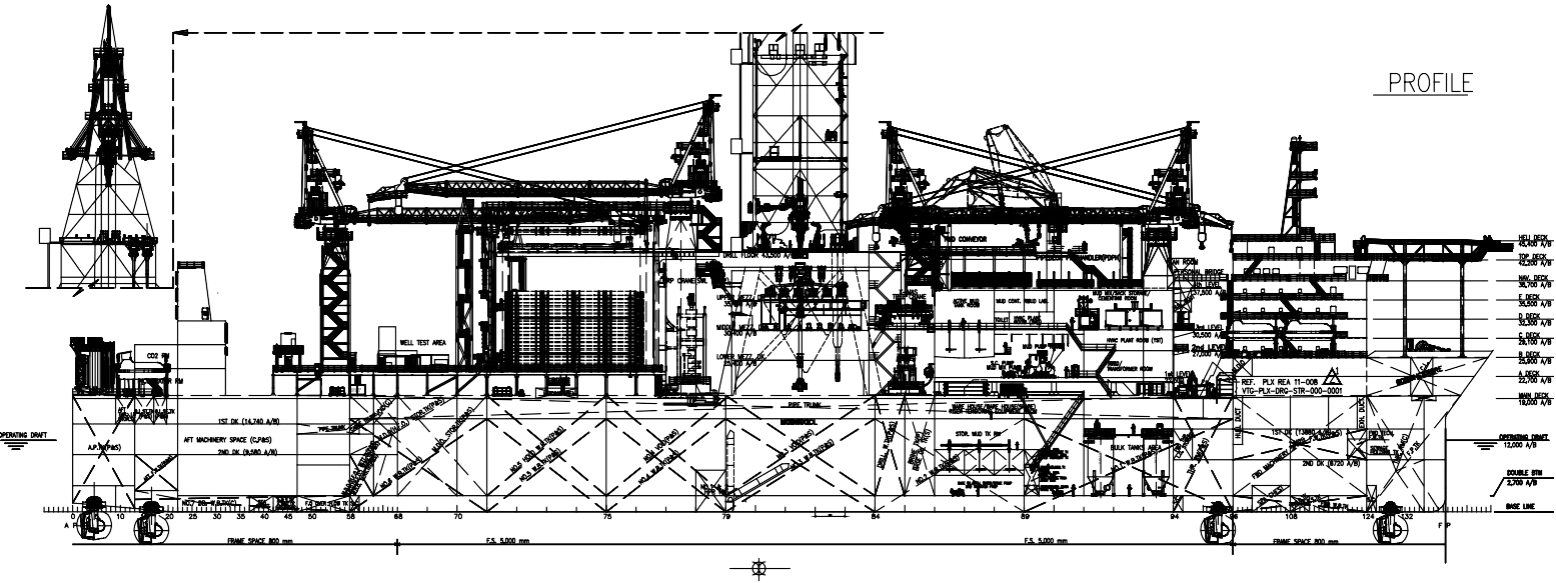
6th GEN ULTRA DEEPWATER DRILLSHIP

More information: marketing@vantagedrilling.com



GENERAL ARRANGEMENT PROFILE

PROFILE



A DECK PLAN
(22,700 A/B)

B DECK PLAN
(25,900 A/B)

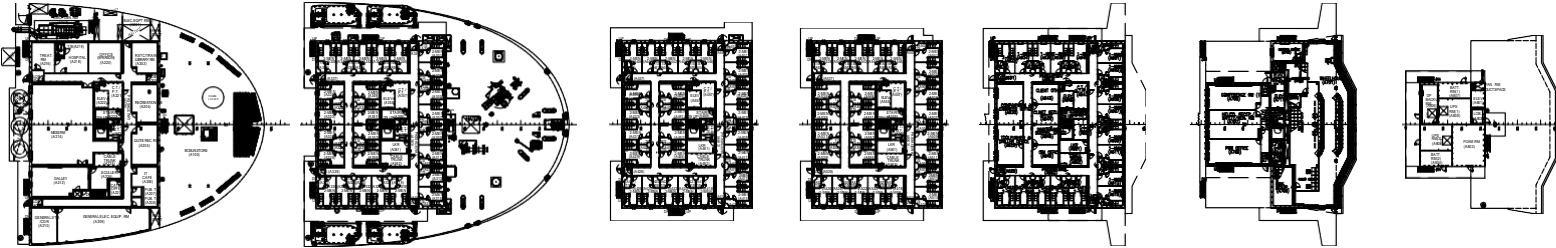
C DECK PLAN
(29,100 A/B)

D DECK PLAN
(32,300 A/B)

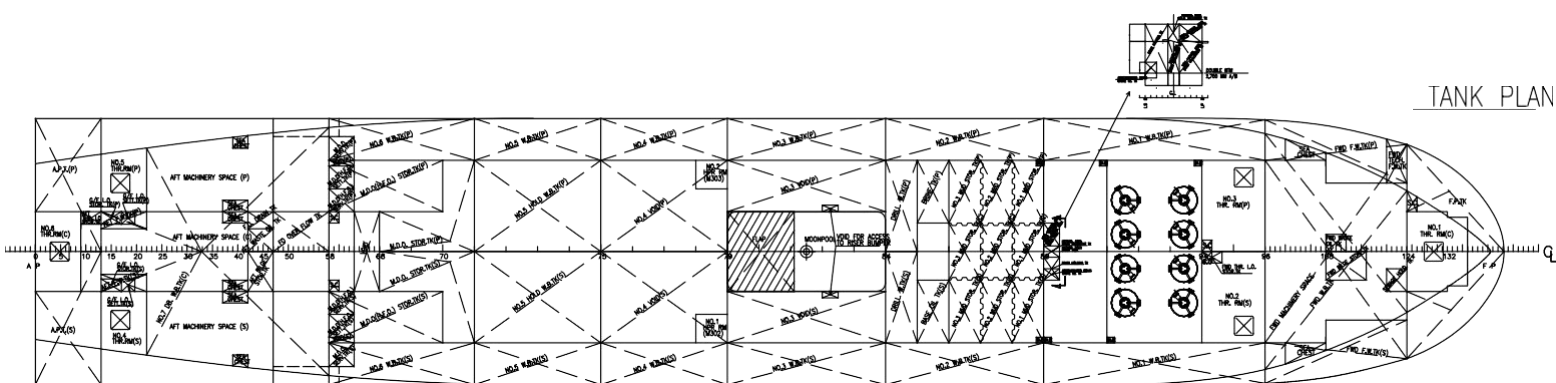
E DECK PLAN
(35,500 A/B)

NAV. DECK PLAN
(38,700 A/B)

TOP DECK PLAN
(42,200 A/B)



TANK PLAN



Revision Date: August 2021

These specifications are intended for general reference purpose only and shall not be contractually binding. Contractor reserves the right to change these specifications at any time without prior notice. All equipment shall be operated and maintained in line with Vantage guidelines and within the limits of OEM specifications.