



TOPAZ DRILLER

BAKER MARINE PACIFIC CLASS 375 JACK-UP

More information: marketing@vantagedrilling.com



TECHNICAL SPECIFICATIONS

General Information

Rig Design	BMC 375
Year Entered Service	2009
Builder	PPL Shipyard Pte Ltd
Class	DNV
Flag	Panama

General Specification

Hull Length	236'
Hull Breadth	224'
Hull Depth	28'
Legs / Type	3 x 145.3 longitudinal, triangle
Accommodation	120 POB
Helideck	CAP437, 75ft Octagon, Sikorsky S-61N with ABS extension to suit S-92 with MTOM 12 ton

Operational Capabilities

Max Water Depth	375' designed/ 375' outfitted
Transit Draft	19.5'
Max Drilling Depth	30,000'
Cantilever	75' x 30'
Max Cantilever Load	2599 Kips
Variable Deck Load	2599 Kips
Variable Deck Load	7498 kips (Operating) 5000 kips (Transit)

Drilling Package

Derrick	Loadmaster offset derrick, 35 x 35 ft @ base; 14 x 16 ft @ top x 160 ft clear working height
Hookload Capacity	1.5 million lbs static hook load capacity
Racking Capacity	- 365 Stands of 5 7/8" drill pipe range II triples x 93 ft (33,945 ft) - 14 Stands of 9 1/2" drill collar range II triples x 93 ft (1,302 ft) - 12 Stands of 8" drill collar range II triples x 93 ft (1,116 ft)
Drawworks	Sense EDM Ultrahoist® 750-3000, c/w 2 x GEB22 AC motors (3,000 HP)
Rotary Table	NOV D-495 7K, 49 1/2" hydraulically operated, 800 tons rated, 39,880 ft lbs @ 20 rpm
Iron Roughneck	1 x Weatherford Torkwrench 10-100 IR with PowerArm 2.1, tubular range 2 1/2" to 10", MU & BO torque, 100,000ft lbs, Max Spin-in/Spin-out torque 3,212 ft-lbs
Topdrive	Canrig model 1275 AC, lifting capacity 750 tons, Quill capacity 750 tons). 51,400 ft lbs max continuous torque @ 120 rpm, 70,800 ft lbs intermittent torque @ 0 rpm, 0-265 max rpm, 1 x 1,150 HP GEB20 AC motor

Storage Capacities

Diesel	4,114 bbls
Drill Water	22,035 bbls
Potable Water	3,542 bbls
Bulk Material	11,652 ft3 (mud + cement)
Base Oil	1,273 bbls
Brine	1,271 bbls
Liquid Mud	1,019 bbls active / 3,059 bbls reserve
Sack Store	5,000 sack

Mud System

Working Pressure	7,500 psi
Mud Pumps	3 x Eweco E-2200-15, 9"x15", 2200 HP, 7,500 psi c/w 2 x GEB 22D AC motors
Shakers	4 x NOV Brandt VSM 300 BEM dual deck shakers (1 configured as Desander/Desilter)

Power Generation

Main Engines	5 x CAT 3516B Diesel engines, 1383 kW, 1200 rpm
Main Generators	5 x Kato AC alternator, 2150 kVA, 1720 kW, 1200 rpm, 690V, 60 Hz, 3 Ph
Emergency Generators	1 x Leroy Somer AC alternator, 900 KVA, 720 kW, 1800 rpm, 480V, 60 Hz, 3 Ph

Special Features & Other Information

Jacking System	Baker Marine model BMPL J800-2P, c/w 72 active drive pinions powered by 36 N ^o 46 kW AC drive motors (12 per jackcase, 4 per chord), normal jacking capacity 19,800 mt
Mooring System	4 x 65 HP Mentrade Anchor Winches, 6 mt delta flippers
Work Offline (WO)	Ability to make-up drill pipe and casing stands offline.

BOP & Well Control Equipment

BOP Ram Preventers	1 ea Control Flow, 13 5/8" 10,000 psi, Type "U" Double & Single
BOP Annular Preventer	1 x Control Flow, 13 5/8"- 5,000 psi, Annular Type "S"
Diverter	1 x Vetco Gray 49 1/2" KFDJ-500 STD 500 psi (27 1/2" ID) diverter with 14" flow line and 2 x 12" overboard lines

Offline Capabilities

Offline Tubular	1 x Crane Safe OAC offline activities crane, 5,000 lbs SWL
------------------------	--

Revision Date: August 2021

These specifications are intended for general reference purpose only and shall not be contractually binding. Contractor reserves the right to change these specifications at any time without prior notice. All equipment shall be operated and maintained in line with Vantage guidelines and within the limits of OEM specifications.



TOPAZ DRILLER

BAKER MARINE PACIFIC CLASS 375 JACK-UP

More information: marketing@vantagedrilling.com



TECHNICAL SPECIFICATIONS

Handling Systems

Deck Cranes	- 2 x Baker Marine 2250-E w/ 120 ft boom, main hoist ratings – 50.77 mt @ 25 ft radius and 13.83 mt @ 127.5 ft radius (static), 33.85 mt @ 25ft radius and 9.22 mt @ 127.5 ft radius (dynamic) - 1 x Baker Marine 900-E w/ 100 ft boom, main hoist ratings - 22.982 mt @ 20 ft radius and 7.029 mt @ 102.7 ft radius (static), 15.321 mt @ 20 ft radius and 4.686 mt @ 102.7 ft radius (dynamic)
BOP Handling	2 x JD Neuhaus model EH 60 pneumatically operated BOP hoists each with a capacity of 60 mt
Xmas Tree Handling	1 x Xmas Tree trolley beams rated at 30 mt c/w hoist
Conductor Tensioner	1 x Patriot 225 mt capacity CTU with 350 mm stroke
Secondary BOP	1 x TSC Tensioning System, 104 tons
Tensioning System	SWL, stroke length 1000 mm

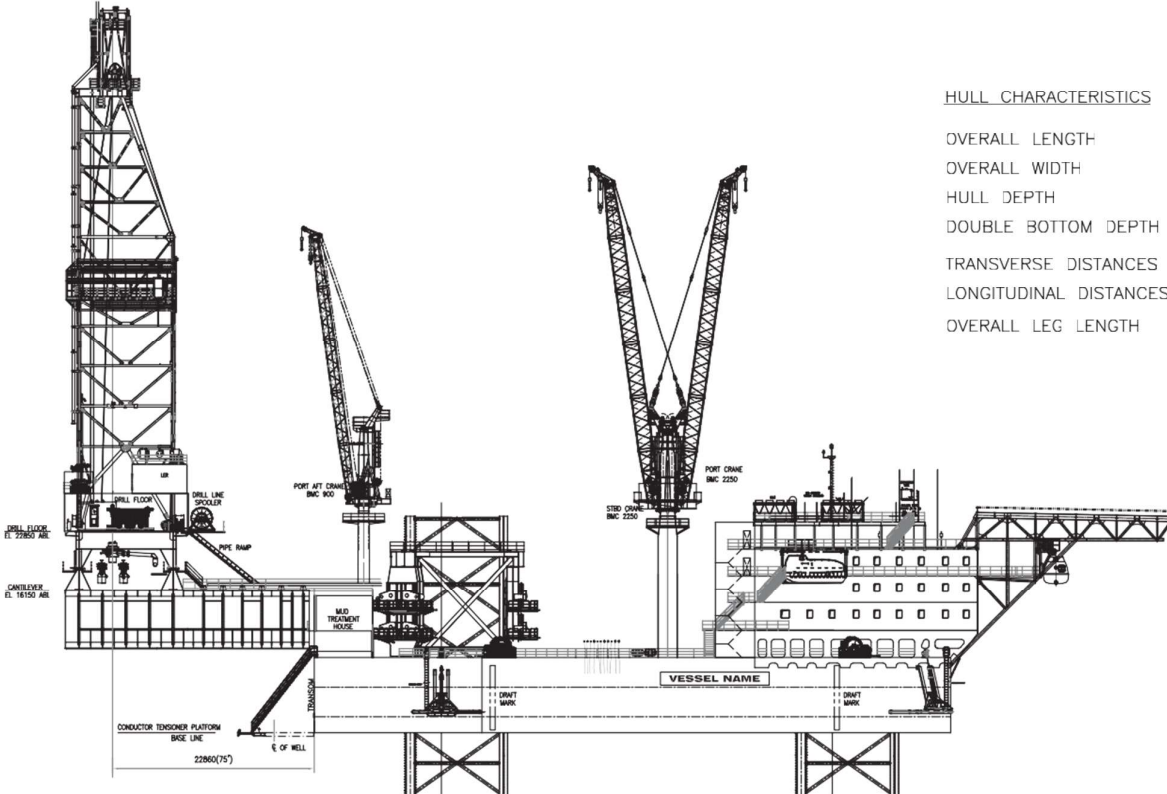
This is the end of technical specifications sheet.
For more information, please, contact: marketing@vantagedrilling.com

TOPAZ DRILLER
 BAKER MARINE PACIFIC CLASS 375 JACK-UP

More information: marketing@vantagedrilling.com



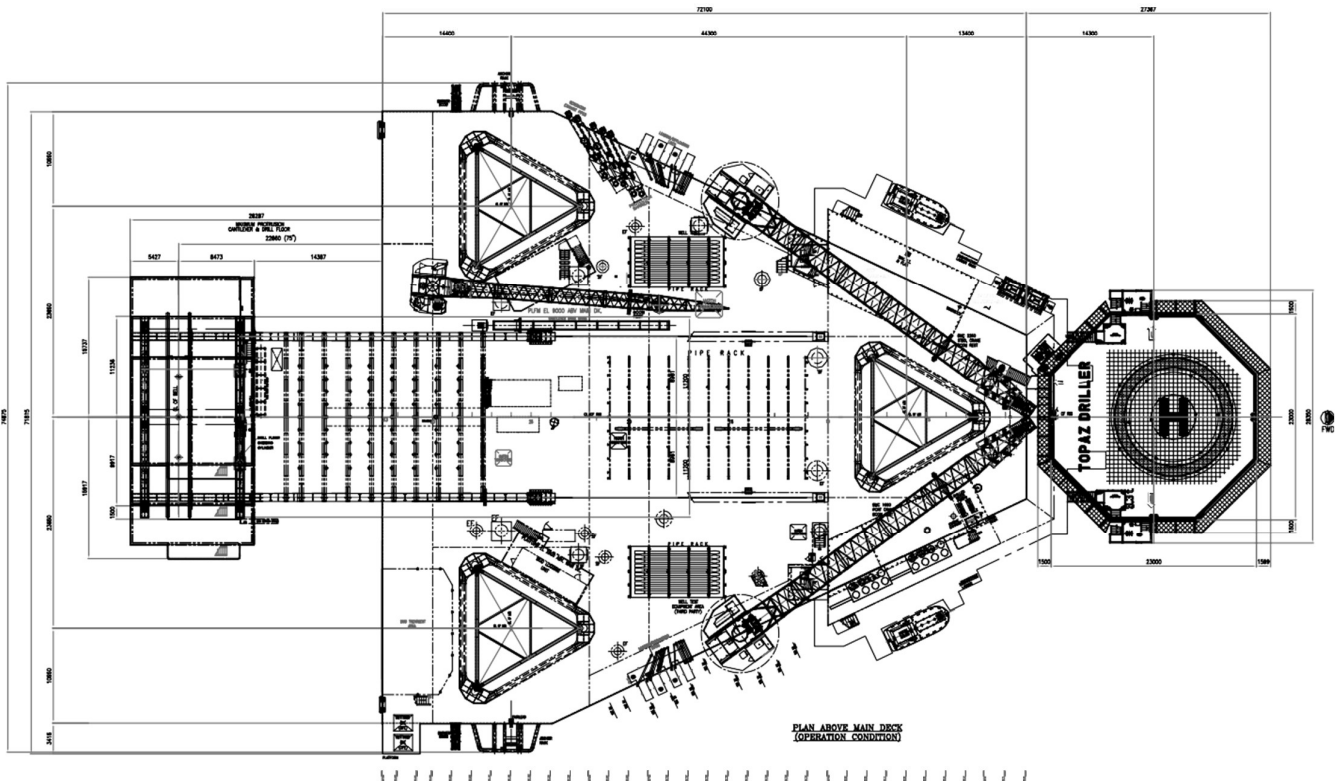
GENERAL ARRANGEMENT PROFILE



HULL CHARACTERISTICS

OVERALL LENGTH	72.1 M
OVERALL WIDTH	68.4 M
HULL DEPTH	8.5 M
DOUBLE BOTTOM DEPTH	1.8 M
TRANSVERSE DISTANCES BETWEEN AFT LEGS	47.3 M
LONGITUDINAL DISTANCES BETWEEN LEGS	44.3 M
OVERALL LEG LENGTH	154.2 M

WELL DECK EL. 25400 ABL	04 DECK ROOF TOP EL. 23900 ABL
04 DECK EL. 20950 ABL	
03 DECK EL. 17800 ABL	
02 DECK EL. 14750 ABL	
01 DECK EL. 11550 ABL	
MAIN DECK EL. 8500 ABL	
INTERMEDIATE DECK EL. 5150 ABL	
TANK TOP EL. 1800 ABL BASE LINE EL. 0	



Revision Date: August 2021

These specifications are intended for general reference purpose only and shall not be contractually binding. Contractor reserves the right to change these specifications at any time without prior notice. All equipment shall be operated and maintained in line with Vantage guidelines and within the limits of OEM specifications.